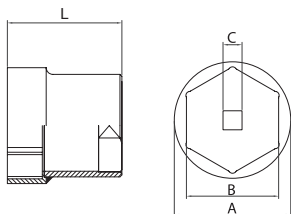
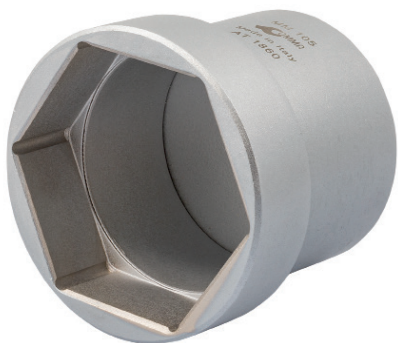




**AT1860 - Bussola per cuscinetti mozzi ruote**

Chiave a bussola esagonale da mm 105 per ghiere registro cuscinetti mozzi autocarri, autobus e rimorchi satinata



Cod.	○ B	A	L	C			Modelli AUTOCARRI
<b>AT1860</b>	105	132	118	1"	1	3730	Mozzi posteriori Fiat 309-Daf 1700 - Volvo FL7-FL10-F12-F16