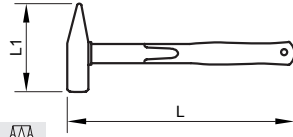
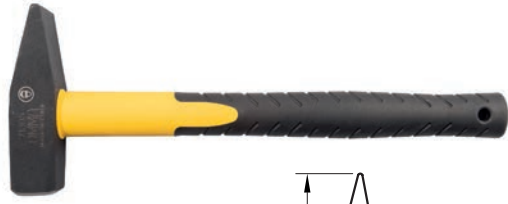


**Martelli da banco DIN 1041 tipo tedesco**

manico in fibra di vetro - impugnatura in gomma

*Machinist's hammers DIN 1041 german type - fibre core handle - rubber haft*



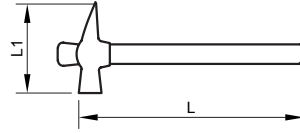
Cod.	gr.	L	L1		
71302	200	270	95	6	400
71303	300	270	105	6	460
71304	400	270	112	6	520
71305	500	280	118	6	635
71306	600	280	122	6	700
71307	800	310	130	6	1000
71308	1000	310	135	6	1225



**Martelli per carpentiere**

manico in legno di faggio

*Carpenter's hammers*



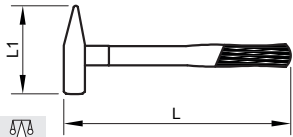
Cod.	gr.	L	L1		
71082	300	450	130	6	530
71083	400	450	135	6	650



**Martelli da banco DIN 1041 tipo tedesco**

manico in legno di frassino - sagomato

*Machinist's hammers with safety collar german type DIN 1041 - wooden handle*



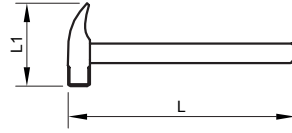
Cod.	gr.	L	L1		
71016	200	280	95	6	260
71017	300	300	105	6	450
71018	400	310	112	6	480
71019	500	320	118	6	580
71020	600	335	122	6	755
71021	800	350	130	6	900
71022	1000	360	135	6	1150
71024	1500	380	145	6	1700
71025	2000	400	155	6	2150



**Martelli a granchio**

manico in legno di faggio

*Nail hammers*



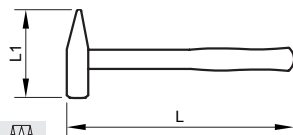
Cod.	gr.	L	L1		
71092	300	285	105	6	340



**Martelli da banco DIN 1041 tipo tedesco**

manico in legno di frassino - sagomato

*Machinist's hammers german type DIN 1041 - wooden handle*



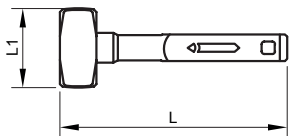
Cod.	gr.	L	L1		
71001	100	265	84	6	160
71002	200	280	95	6	260
71003	300	300	105	6	380
71004	400	310	112	6	490
71005	500	320	118	6	590
71006	600	335	122	6	700
71007	800	350	130	6	900
71008	1000	360	135	6	1100
71010	1500	380	145	6	1700
71011	2000	400	155	6	2150



**Mazzette antisfilamento**

manico in fibra di vetro - impugnatura in gomma

*Anti-unthreading blocksmith's hammer - fibre core handle - elastic grip*



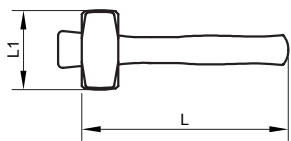
Cod.	gr.	L	L1		
72301	800	270	88	6	1000
72302	1000	270	95	6	1200
72303	1250	270	100	6	1400
72304	1500	270	110	6	1700
72305	2000	270	120	6	2185



### Mazzette

manico in legno di faggio

*Anti-unthreading blocksmith's hammers - wooden handle*



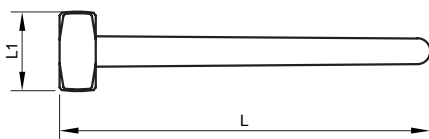
Cod.	gr.	L	L1		
72001	800	280	88	6	935
72002	1000	280	95	6	1135
72003	1250	280	100	6	1385
72004	1500	280	110	6	1635
72005	2000	280	120	6	2120



### Mazze

manico in legno di faggio

*Sedge hammers*



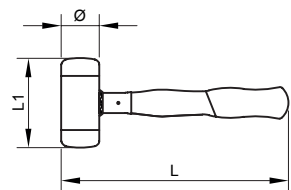
Cod.	gr.	L	L1		
72105	3000	910	140	4	3560
72106	5000	910	160	4	5560
72107	8000	910	180	3	8560
72108	10000	910	200	2	10560



### Mazzuole antirimbalo con battenti intercambiabili

manico in legno di frassino

*Recoilless mallets with replaceable heads*



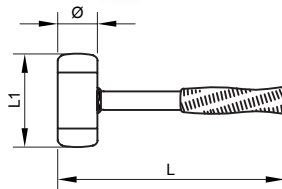
Cod.	Ø	L	L1		
73002	30	330	110	6	475
73003	35	330	110	6	568
73004	40	330	115	6	663
73005	45	340	120	6	813
73006	50	340	125	4	999
73007	60	350	130	4	1368



### Mazzuole antirimbalo con battenti intercambiabili

manico in ferro con impugnatura in gomma

*Recoilless mallets with replaceable heads*

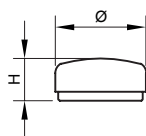


Cod.	Ø	L	L1		
73092	30	290	110	6	558
73093	35	290	110	6	658
73094	40	300	115	6	747
73095	45	310	120	6	1052
73096	50	310	125	4	1235
73097	60	320	130	4	1501



### Coppie tasselli di ricambio per mazzuole antirimbalo

*Two spare heads for recoilless mallets*

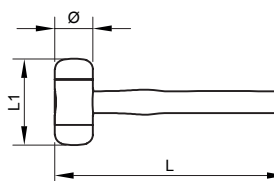


Cod.	Ø	H		
73202	30	23	1	25
73203	35	25	1	35
73204	40	25	1	50
73205	45	25	1	65
73206	50	27	1	85
73207	60	27	1	135

### Mazzuole con battenti intercambiabili in poliuretano

manico in legno di frassino

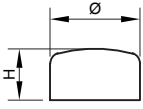
*Mallets with replaceable polyurethan heads*



Cod.	Ø	L	L1		
73060	22	260	75	12	151
73061	28	280	85	12	249
73062	35	300	90	12	387
73063	42	300	100	8	606
73064	50	320	110	6	873
73065	60	350	115	3	1340

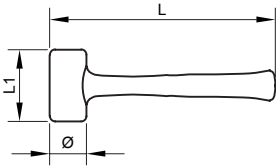


**Coppie tasselli di ricambio per mazzuole poliuretano**  
*Two spare heads for polyurethan mallets*



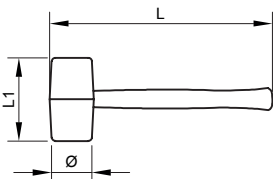
Cod.	Ø	H		
73260	22	25	1	15
73261	28	25	1	30
73262	35	27	1	50
73263	42	30	1	85
73264	50	33	1	120
73265	60	33	1	190

**Mazzuole antirimbalo interamente rivestite in gomma**  
*Recoilness mallets with rubber coating*



Cod.	Ø	L	L1		
73135	35	250	80	1	380
73137	45	260	90	1	590
73138	50	275	100	1	840
73139	55	300	105	1	1030

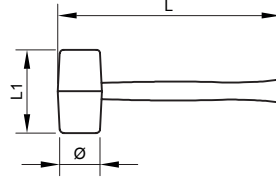
**Mazzuole in gomma nera**  
 manico in legno di frassino  
*Black rubber mallets*



Cod.	Ø	L	L1		
74111	85x50	300	85	1	300
74112	100x55	330	100	1	450
74113	113x60	330	115	1	600
74114	120x65	360	120	1	700
74115	130x80	370	130	1	1000



**Mazzuole in gomma bianca**  
 manico in legno di frassino  
*White rubber mallets*



Cod.	Ø	L	L1		
74119	50	300	85	1	300
74120	55	330	100	1	450
74121	60	330	115	1	600
74122	65	360	120	1	700



**Manici legno di ricambio per mazzuole antirimbalo**  
 Cod. 73002-73007

legno di frassino completo di cuneo di legno e spina elastica  
*Ash wooden handles for mallets Cod. 73002-73007 with edge and pin*



Cod.	Ø	L		
74502	30÷45	300	1	105
74503	50÷60	300	1	125

**Manici di ricambio per mazzuole poliuretano - Cod. 73060-73065**  
 legno di frassino  
*Ash wooden handles for mallets Cod. 73060-73065*



Cod.	Ø	L		
74521	22	260	1	50
74522	28	280	1	50
74523	35	310	1	85
74524	42	320	1	85
74525	50	360	1	120
74526	60	380	1	170

**Manici di ricambio per martelli**  
 Cod. 71001-71011

legno di frassino  
*Wooden handles for mallets Cod. 71001-71011*



Cod.	gr.	L		
74531	100	260	1	30
74532	200	270	1	60
74533	300	290	1	65
74534	400	300	1	80
74535	500	320	1	95
74536	600	330	1	105
74537	800	360	1	140
74538	1000	370	1	170
74540	1500	400	1	190
74541	2000	420	1	265

**Manici di ricambio per mazzette antisalzamento 72001÷72005**  
legno di frassino

*Spare wooden handles for anti-unthreading blocksmith's hammers*  
72001÷72005



Cod.	L		
74575	280	1	145

**Manico di ricambio per mazze**  
Cod.72105÷72108

legno di faggio  
*Wooden handles for sledge hammers*



Cod.	L	per gr.		
72111	890	3000÷10000	1	670

**Manici di ricambi per lime**  
legno di faggio

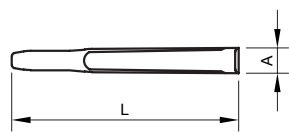
*Wooden handles for files*



Cod.	L		
74591	80	1	10
74593	100	1	20
74595	120	1	40
74597	140	1	60

**Scalpellini per meccanici - UNI 7506**

acciaio silicio al cromo - cromati  
trattamento termico differenziato alla estremità battente  
*Ribbed chisels for mechanics - UNI 7506*



Cod.	A	L		
61001	20	150	10	190
61002	25	200	10	310
61003	30	250	5	500
61004	35	300	5	800



**Cacciaspine**  
acciaio al cromo vanadio - cromate  
*Pin punches*



Cod.	Ø	● x L		
61120	2	8x115	12	50
61121	3	8x125	12	60
61122	4	9,5x150	12	60
61123	5	9,5x165	12	70
61124	6	12,7x180	12	115
61125	8	12,7x180	12	135

**Serie 17 punzoni e cacciaspine**  
supporto in metallo, acciaio al cromo vanadio - cromati  
*Pin and taper punch set - 17 pcs.*



Cod.	Pz./Pcs.		
61130/17	17	1	1667

Composizione:	
CACCIASPINE: Ø	PUNZONI: Ø
2x115	2x120
3x125	3x120
4x150	4x120
5x165	5x120
6x180	6x120
8x180	
3x200	
4x200	
5x200	
6x200	
8x200	
10x200	

**Serie 6 cacciaspine**  
supporto in plastica - acciaio al cromo vanadio - cromate  
*Pin punch set - 6 pcs*



Cod.	Pz./Pcs.		
61130/6	6	1	505

Composizione:	
CACCIASPINE: Ø	
2x115	
3x125	
4x150	
5x165	
6x180	
8x180	

**Cacciaspine con paramano**  
acciaio al cromo vanadio - brunite  
impugnatura anatomica in PVC  
*Heavy duty pin punches*



Cod.	Ø	L		
61121PM	3	140	6	50
61122PM	4	170	6	88
61123PM	5	180	6	90
61124PM	6	205	6	143
61125PM	8	210	6	157
61126PM	10	230	6	242

**Serie 5 cacciaspine con paramano in borsa PVC**  
**Heavy duty pin punch set - 5 pcs.**



Cod.	Pz./Pcs.		
<b>61130PM/B5</b>	5	1	665

Composizione:

CACCIASPINE: ØxL  
 3x140  
 4x170  
 5x180  
 6x205  
 8x210

**Bulini**

acciaio al cromo vanadio - cromati  
**Centre punches**



Cod.	Ø	● x L		
<b>61100</b>	3	9,5x120	6	50
<b>61101</b>	4	9,5x120	6	65
<b>61102</b>	5	9,5x120	6	65

**Punzoni**

acciaio al cromo vanadio - cromati  
**Punches**



Cod.	Ø	● x L		
<b>61110</b>	2	9,5x120	6	45
<b>61111</b>	3	9,5x120	6	45
<b>61112</b>	4	9,5x120	6	45
<b>61113</b>	5	9,5x120	6	45
<b>61114</b>	6	9,5x120	6	45

**Pinza a fustella tipo a revolver con 6 fustelle**  
**Punching plier**



Cod.	mm	L		
<b>66210</b>	da 2 a 5	220	1	265

LINEA BASIC

**Fustelle a cavallotto**  
 acciaio al carbonio - verniciate  
**Joint cutters**



Cod.	Ø			Cod.	Ø		
<b>65001</b>	2	1	75	<b>65031</b>	32	1	630
<b>65002</b>	3	1	75	<b>65032</b>	33	1	660
<b>65003</b>	4	1	75	<b>65033</b>	34	1	660
<b>65004</b>	5	1	85	<b>65034</b>	35	1	760
<b>65005</b>	6	1	85	<b>65035</b>	36	1	760
<b>65006</b>	7	1	130	<b>65036</b>	37	1	850
<b>65007</b>	8	1	130	<b>65037</b>	38	1	850
<b>65008</b>	9	1	145	<b>65038</b>	39	1	850
<b>65009</b>	10	1	145	<b>65039</b>	40	1	850
<b>65010</b>	11	1	170	<b>65040</b>	41	1	980
<b>65011</b>	12	1	170	<b>65041</b>	42	1	980
<b>65012</b>	13	1	205	<b>65042</b>	43	1	980
<b>65013</b>	14	1	205	<b>65043</b>	44	1	980
<b>65014</b>	15	1	230	<b>65044</b>	45	1	1090
<b>65015</b>	16	1	230	<b>65045</b>	46	1	1090
<b>65016</b>	17	1	252	<b>65046</b>	47	1	1090
<b>65017</b>	18	1	252	<b>65047</b>	48	1	1090
<b>65018</b>	19	1	256	<b>65048</b>	49	1	1350
<b>65019</b>	20	1	256	<b>65049</b>	50	1	1350
<b>65020</b>	21	1	357	<b>65050</b>	51	1	1350
<b>65021</b>	22	1	357	<b>65051</b>	52	1	1350
<b>65022</b>	23	1	410	<b>65052</b>	53	1	2125
<b>65023</b>	24	1	410	<b>65053</b>	54	1	2125
<b>65024</b>	25	1	437	<b>65054</b>	55	1	2125
<b>65025</b>	26	1	437	<b>65055</b>	56	1	2125
<b>65026</b>	27	1	492	<b>65056</b>	57	1	2630
<b>65027</b>	28	1	492	<b>65057</b>	58	1	2630
<b>65028</b>	29	1	560	<b>65058</b>	59	1	2630
<b>65029</b>	30	1	560	<b>65059</b>	60	1	2630
<b>65030</b>	31	1	630				

**Punteruolo punta tonda e punta quadra**  
 acciaio al carbonio - cromati  
**Round punch - Square point punch**



Cod.	ØxL1		
<b>62001 punta tonda</b>	6x100	12	80
<b>62002 punta quadra</b>	6x100	12	80

LINEA BASIC

**Serie 2 punteruoli in blister**  
**Punch set - 2 pcs**



Cod.	Pz./Pcs.		
<b>62000/2</b>	2	1	174

LINEA BASIC

Composizione:  
 62001 + 62002